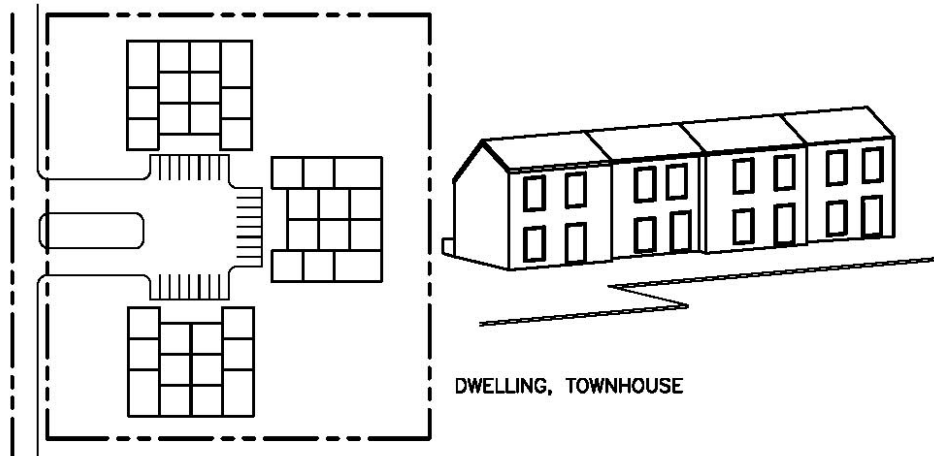


$$\text{SLOPE PERCENTAGE} = \frac{\text{RISE}}{\text{RUN}} \times 100 = \%$$

$$\text{SLOPE RATIO} = \frac{\text{RISE}}{\text{RUN}} = (X) \text{ FEET RUN TO ONE FOOT RISE} = X:1$$

% GRADE	100%	50%	40%	33.3%	30%	25%	20%	15%	12%	10%	8%	6%
DEGREES	45	26.6	21.8	18.4	16.7	14	11.3	8.5	6.8	5.7	4.6	3.4
RATIO	1:1	2:1	2.5:1	3:1	3.3:1	4:1	5:1	6.7:1	8.3:1	110:1	12.5:1	16.7:1

FIGURE 25



DWELLING, TOWNHOUSE

FIGURE 26

CENTER TOWNSHIP ZONING
APPENDIX B
FIGURE 25 AND 26